

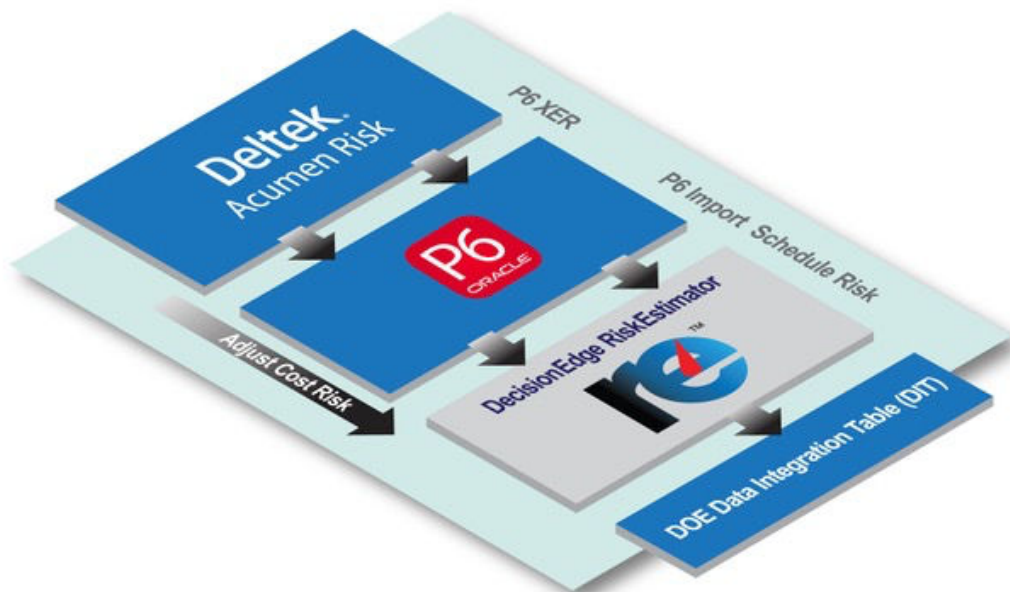
DecisionEdge Launches RiskEstimator Software, Cutting Schedule & Cost Risk Estimation from 40 Hours to Five Minutes for Federal Programs

AMARILLO, Texas — March 1, 2026 — DecisionEdge, a software division of Integrated Management Concepts, Inc. (IMC), today announced the release of RiskEstimator™, a new automated risk estimation platform that transforms schedule risk outputs into fully priced cost and risk estimates in minutes instead of days. RiskEstimator is already deployed in production at the U.S. Department of Energy’s Pantex Plant, the nation’s primary site for nuclear weapons assembly, disassembly, and life-extension activities.

RiskEstimator addresses a long-standing bottleneck in federal program management: the manual, error-prone process of integrating schedule risk outputs, pricing activities, and assembling compliant cost risk deliverables. By automating these workflows, RiskEstimator reduces estimation cycles from approximately 40 hours per project to about five minutes, while significantly lowering spreadsheet count, rework rates, and human error.

A Breakthrough in Cost & Schedule Risk Integration

RiskEstimator operates as an automated integration and pricing layer between leading schedule risk tools and enterprise cost systems. The process begins with Deltek Acumen Risk, which generates multiple schedule risk outputs from Oracle P6 schedules. Traditionally, each file required manual export to Excel, individual pricing, and labor-intensive rollups.



With RiskEstimator, those steps are eliminated. The software automatically integrates multiple P6 schedule risk files, applies pricing logic through DecisionEdge’s WebEVM cost engine, and produces complete cost and risk estimates in minutes.

“RiskEstimator has dramatically shortened the time to integrate and price P6 files by eliminating manual import and export to Excel, while significantly reducing the human error inherent in manual processes,” said senior leadership at the DOE’s Pantex Plant.

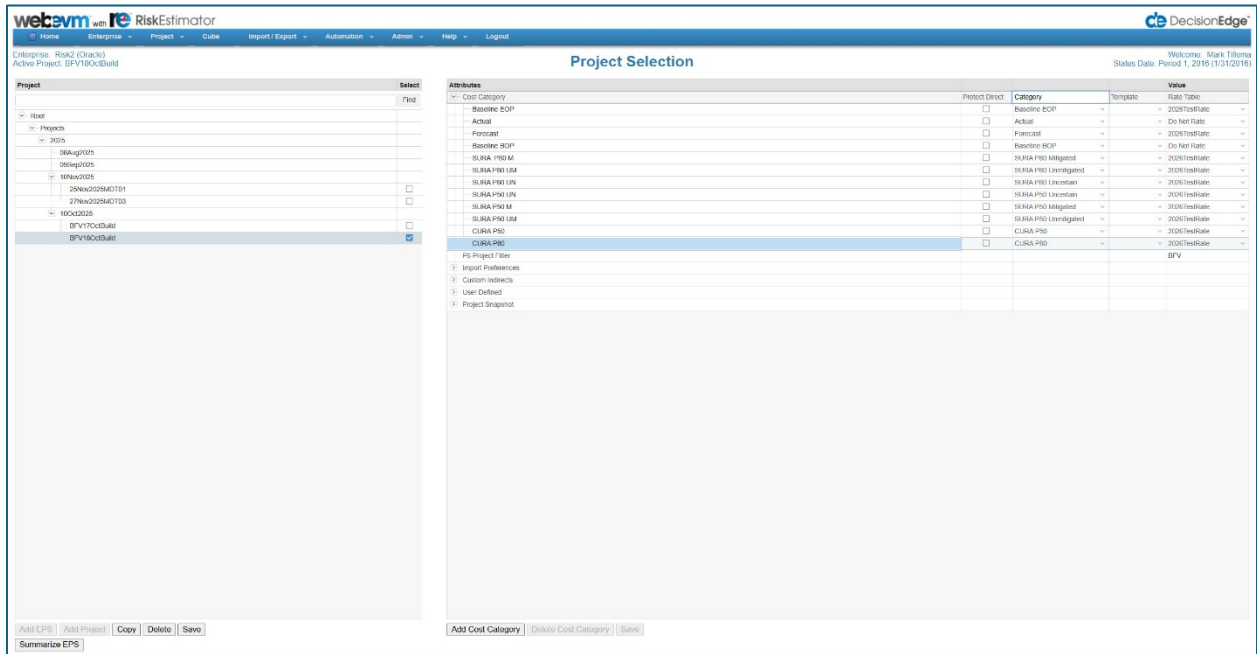
Three Pillars of Differentiation

1. Automated Integration at Scale

RiskEstimator supports Acumen Risk outputs and Primavera P6 schedules, automatically integrating schedule risk, pricing activities, and rolling up direct and indirect costs without manual intervention.

2. Standardized, Compliant Outputs - Examples

The platform generates a standardized DOE Data Integration Table (DIT) Excel output, eliminating the need for manual DIT construction and enabling users to preview configurations before export.



Additionally, DecisionEdge developed a standardized DOE Data Integration Table (DIT) Excel output, eliminating the need for manual DIT construction. The following lets you configure your DIT output file.

Export DIT Data

Attributes	Value
DIT Excel Control	KC
Site Costs	Select Deterministic
Select Deterministic	Select 50% NUKA Estimate
Select 50% NUKA Estimate	Select 50% CURIA Estimate
Select 50% CURIA Estimate	Select 80% CURIA Estimate
Select 80% CURIA Estimate	ECC Mapping Labor Costs
ECC Mapping Labor Costs	ECC Mapping Special Nuclear Material
ECC Mapping Special Nuclear Material	ECC Mapping CoIP
ECC Mapping CoIP	ECC Mapping CO Materials and Supplies
ECC Mapping CO Materials and Supplies	ECC Mapping Subcontract Labor
ECC Mapping Subcontract Labor	ECC Mapping Capital Equipment
ECC Mapping Capital Equipment	ECC Mapping Staff Augmentation
ECC Mapping Staff Augmentation	ECC Mapping Other Costs

Buttons: Preview DIT Data, Download DIT Data, Save

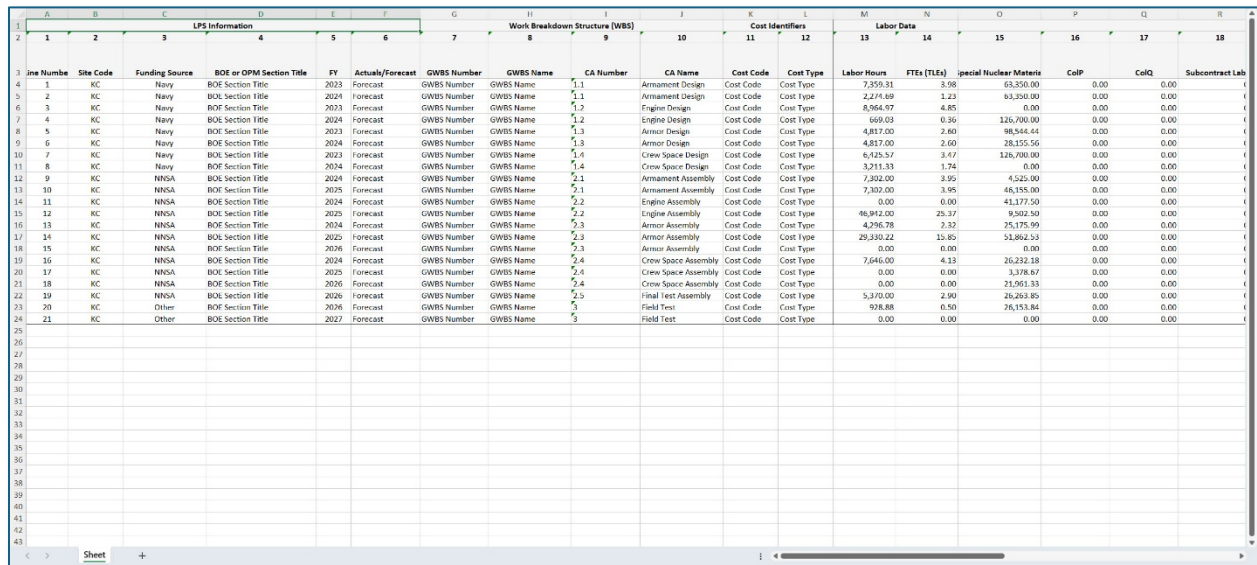
Once you configure your DIT output you can preview it before outputting to Excel.

Export DIT Data

LPS Information				Work Breakdown Structure (WBS)						Cost Identifiers		Labor Data				Cost Elements							
Line	Site Code	Funding Source	BOE or OPM Section	FY	Actuats/Fore	GWBS Num	GWBS Name	CA Number	CA Name	Cost Code	Cost Type	Labor Hours	FTEs (FLEs)	Special Nuclear	CoIP	CoIQ	Subcontract La...	PO / Materials and ...	CoIT	Capital Equipm...	Staff Augmenta...	Labor Costs	Off
1	KC	Navy	ECC Section Title	2023	Forecast	GWBS Number	GWBS Name	1.1	Armament Design	Cost Code	Cost Type	7,302.31	3.38	63,300.00	0.00	0.00	0.00	3,000,000.00	0.00	0.00	0.00	1,958,251.46	0.00
2	KC	Navy	ECC Section Title	2024	Forecast	GWBS Number	GWBS Name	1.1	Armament Design	Cost Code	Cost Type	2,274.69	1.23	63,300.00	0.00	0.00	0.00	3,000,000.00	0.00	0.00	0.00	877,579.51	0.00
3	KC	Navy	ECC Section Title	2023	Forecast	GWBS Number	GWBS Name	1.2	Engine Design	Cost Code	Cost Type	8,964.97	4.80	0.00	0.00	0.00	0.00	0.00	0.00	0.00	0.00	2,433,989.96	0.00
4	KC	Navy	ECC Section Title	2024	Forecast	GWBS Number	GWBS Name	1.2	Engine Design	Cost Code	Cost Type	869.03	0.36	126,700.00	0.00	0.00	0.00	10,800,000.00	0.00	0.00	0.00	181,841.94	0.00
5	KC	Navy	ECC Section Title	2023	Forecast	GWBS Number	GWBS Name	1.3	Armor Design	Cost Code	Cost Type	4,917.30	2.60	98,544.44	0.00	0.00	0.00	7,777,777.78	0.00	0.00	0.00	1,307,875.50	0.00
6	KC	Navy	ECC Section Title	2024	Forecast	GWBS Number	GWBS Name	1.3	Armor Design	Cost Code	Cost Type	4,917.30	2.60	26,166.96	0.00	0.00	0.00	2,222,222.22	0.00	0.00	0.00	1,307,875.50	0.00
7	KC	Navy	ECC Section Title	2023	Forecast	GWBS Number	GWBS Name	1.4	Crew Space Des.	Cost Code	Cost Type	6,425.57	3.47	126,700.00	0.00	0.00	0.00	2,800,000.00	0.00	0.00	0.00	1,744,541.35	0.00
8	KC	Navy	ECC Section Title	2024	Forecast	GWBS Number	GWBS Name	1.4	Crew Space Des.	Cost Code	Cost Type	3,211.33	1.74	0.00	0.00	0.00	0.00	0.00	0.00	0.00	0.00	871,877.80	0.00
9	KC	NNSA	ECC Section Title	2024	Forecast	GWBS Number	GWBS Name	2.1	Armament Assm.	Cost Code	Cost Type	7,302.30	3.38	4,525.00	0.00	0.00	0.00	892,857.14	0.00	0.00	0.00	1,982,483.00	0.00
10	KC	NNSA	ECC Section Title	2023	Forecast	GWBS Number	GWBS Name	2.1	Armament Assm.	Cost Code	Cost Type	7,302.30	3.38	46,155.00	0.00	0.00	0.00	9,107,422.86	0.00	0.00	0.00	1,982,483.00	0.00
11	KC	NNSA	ECC Section Title	2024	Forecast	GWBS Number	GWBS Name	2.2	Engine Assembly	Cost Code	Cost Type	0.00	0.00	41,177.50	0.00	0.00	0.00	5,687,500.00	0.00	0.00	0.00	0.00	0.00
12	KC	NNSA	ECC Section Title	2023	Forecast	GWBS Number	GWBS Name	2.2	Engine Assembly	Cost Code	Cost Type	46,842.00	25.37	9,502.50	0.00	0.00	0.00	1,312,500.00	0.00	0.00	0.00	12,744,753.00	0.00
13	KC	NNSA	ECC Section Title	2024	Forecast	GWBS Number	GWBS Name	2.3	Armor Assembly	Cost Code	Cost Type	4,250.76	2.32	25,173.99	0.00	0.00	0.00	9,938,277.78	0.00	0.00	0.00	1,160,376.68	0.00
14	KC	NNSA	ECC Section Title	2023	Forecast	GWBS Number	GWBS Name	2.3	Armor Assembly	Cost Code	Cost Type	29,330.22	16.80	91,842.33	0.00	0.00	0.00	20,466,666.67	0.00	0.00	0.00	7,963,153.83	0.00
15	KC	NNSA	ECC Section Title	2024	Forecast	GWBS Number	GWBS Name	2.3	Armor Assembly	Cost Code	Cost Type	0.00	0.00	0.00	0.00	0.00	0.00	0.00	0.00	0.00	0.00	0.00	0.00
16	KC	NNSA	ECC Section Title	2024	Forecast	GWBS Number	GWBS Name	2.4	Crew Space Ass.	Cost Code	Cost Type	7,540.00	4.13	25,252.16	0.00	0.00	0.00	1,038,206.33	0.00	0.00	0.00	6,919,830.00	0.00
17	KC	NNSA	ECC Section Title	2023	Forecast	GWBS Number	GWBS Name	2.4	Crew Space Ass.	Cost Code	Cost Type	0.00	0.00	3,373.67	0.00	0.00	0.00	132,333.33	0.00	0.00	0.00	0.00	0.00
18	KC	NNSA	ECC Section Title	2024	Forecast	GWBS Number	GWBS Name	2.4	Crew Space Ass.	Cost Code	Cost Type	0.00	0.00	21,961.33	0.00	0.00	0.00	866,666.67	0.00	0.00	0.00	0.00	0.00
19	KC	NNSA	ECC Section Title	2023	Forecast	GWBS Number	GWBS Name	2.5	Field Test Assm.	Cost Code	Cost Type	5,370.00	2.90	25,263.85	0.00	0.00	0.00	1,038,455.33	0.00	0.00	0.00	1,827,650.00	0.00
20	KC	Other	ECC Section Title	2023	Forecast	GWBS Number	GWBS Name	3	Field Test	Cost Code	Cost Type	923.86	0.50	35,153.84	0.00	0.00	0.00	103,215.67	0.00	0.00	0.00	282,190.32	0.00
21	KC	Other	ECC Section Title	2027	Forecast	GWBS Number	GWBS Name	3	Field Test	Cost Code	Cost Type	0.00	0.00	0.00	0.00	0.00	0.00	0.00	0.00	0.00	0.00	0.00	0.00

Buttons: Preview DIT Data, Download DIT Data

The last step is to output the file to Excel. Removing the manual process to create the DIT further streamlined the process.



LPS Information						Work Breakdown Structure (WBS)				Cost Identifiers		Labor Data					
Line Number	Site Code	Funding Source	BOE or OPM Section Title	FY	Actuals/Forecast	GWBS Number	GWBS Name	CA Number	CA Name	Cost Code	Cost Type	Labor Hours	FTEs (FTEs)	Special Nuclear Materials	CoP	CoQ	Subcontract Lab
1	KC	Navy	BOE Section Title	2023	Forecast	GWBS Number	GWBS Name	1.1	Armament Design	Cost Code	Cost Type	7,359.31	3.98	63,350.00	0.00	0.00	0.00
2	KC	Navy	BOE Section Title	2024	Forecast	GWBS Number	GWBS Name	1.1	Armament Design	Cost Code	Cost Type	2,274.69	1.23	63,350.00	0.00	0.00	0.00
3	KC	Navy	BOE Section Title	2023	Forecast	GWBS Number	GWBS Name	1.2	Engine Design	Cost Code	Cost Type	8,964.97	4.85	0.00	0.00	0.00	0.00
4	KC	Navy	BOE Section Title	2024	Forecast	GWBS Number	GWBS Name	1.2	Engine Design	Cost Code	Cost Type	669.03	0.36	116,700.00	0.00	0.00	0.00
5	KC	Navy	BOE Section Title	2023	Forecast	GWBS Number	GWBS Name	1.3	Armor Design	Cost Code	Cost Type	4,817.00	2.60	88,844.44	0.00	0.00	0.00
6	KC	Navy	BOE Section Title	2024	Forecast	GWBS Number	GWBS Name	1.3	Armor Design	Cost Code	Cost Type	4,817.00	2.60	28,155.56	0.00	0.00	0.00
7	KC	Navy	BOE Section Title	2023	Forecast	GWBS Number	GWBS Name	1.4	Crew Space Design	Cost Code	Cost Type	6,425.57	3.47	116,700.00	0.00	0.00	0.00
8	KC	Navy	BOE Section Title	2024	Forecast	GWBS Number	GWBS Name	1.4	Crew Space Design	Cost Code	Cost Type	3,211.33	1.74	0.00	0.00	0.00	0.00
9	KC	NNSA	BOE Section Title	2024	Forecast	GWBS Number	GWBS Name	2.1	Armament Assembly	Cost Code	Cost Type	7,302.00	3.95	4,526.00	0.00	0.00	0.00
10	KC	NNSA	BOE Section Title	2025	Forecast	GWBS Number	GWBS Name	2.1	Armament Assembly	Cost Code	Cost Type	7,302.00	3.95	46,185.00	0.00	0.00	0.00
11	KC	NNSA	BOE Section Title	2024	Forecast	GWBS Number	GWBS Name	2.2	Engine Assembly	Cost Code	Cost Type	0.00	0.00	41,177.50	0.00	0.00	0.00
12	KC	NNSA	BOE Section Title	2025	Forecast	GWBS Number	GWBS Name	2.2	Engine Assembly	Cost Code	Cost Type	46,942.00	25.37	9,902.50	0.00	0.00	0.00
13	KC	NNSA	BOE Section Title	2024	Forecast	GWBS Number	GWBS Name	2.3	Armor Assembly	Cost Code	Cost Type	4,246.78	2.32	35,175.90	0.00	0.00	0.00
14	KC	NNSA	BOE Section Title	2025	Forecast	GWBS Number	GWBS Name	2.3	Armor Assembly	Cost Code	Cost Type	29,330.22	15.85	51,862.53	0.00	0.00	0.00
15	KC	NNSA	BOE Section Title	2026	Forecast	GWBS Number	GWBS Name	2.3	Armor Assembly	Cost Code	Cost Type	0.00	0.00	0.00	0.00	0.00	0.00
16	KC	NNSA	BOE Section Title	2024	Forecast	GWBS Number	GWBS Name	2.4	Crew Space Assembly	Cost Code	Cost Type	7,646.00	4.13	16,232.38	0.00	0.00	0.00
17	KC	NNSA	BOE Section Title	2025	Forecast	GWBS Number	GWBS Name	2.4	Crew Space Assembly	Cost Code	Cost Type	0.00	0.00	3,378.67	0.00	0.00	0.00
18	KC	NNSA	BOE Section Title	2026	Forecast	GWBS Number	GWBS Name	2.4	Crew Space Assembly	Cost Code	Cost Type	0.00	0.00	21,961.33	0.00	0.00	0.00
19	KC	NNSA	BOE Section Title	2026	Forecast	GWBS Number	GWBS Name	2.5	Final Test Assembly	Cost Code	Cost Type	5,370.00	2.90	26,263.85	0.00	0.00	0.00
20	KC	Other	BOE Section Title	2026	Forecast	GWBS Number	GWBS Name	3	Field Test	Cost Code	Cost Type	938.88	0.50	16,153.84	0.00	0.00	0.00
21	KC	Other	BOE Section Title	2027	Forecast	GWBS Number	GWBS Name	3	Field Test	Cost Code	Cost Type	0.00	0.00	0.00	0.00	0.00	0.00

3. Enterprise-Grade Accuracy & Speed

Built on WebEVM's proven cost engine, RiskEstimator delivers rapid time-to-value while maintaining accuracy and auditability required for large, complex federal programs.

Use Cases Driving Adoption

- Federal agencies managing large, resource-loaded schedules with recurring cost risk analyses
- Program management offices seeking faster, more defensible budget and contingency estimates
- Contractors supporting EIA-748-aligned earned value and risk workflows
- Organizations replacing spreadsheet-heavy estimation processes with automated, repeatable systems

Why It Matters Now

As federal programs face increasing cost scrutiny, compressed timelines, and heightened accountability, manual risk estimation workflows are no longer sustainable. RiskEstimator enables agencies and contractors to respond faster to program changes, improve estimate confidence, and reduce operational risk without adding headcount.

About DecisionEdge and IMC

Founded in 1995 and headquartered in Austin, Texas, Integrated Management Concepts, Inc. (IMC) provides advanced program management and analytical solutions to government and commercial clients.



Through its DecisionEdge software unit, IMC has developed and deployed WebEVM since 2010 as a modern, cloud-based earned value management platform supporting enterprise-scale, EIA-748-compliant programs.

About RiskEstimator

RiskEstimator is an automated cost and risk estimation solution that transforms schedule risk outputs into fully priced estimates in minutes. By reducing touchpoints, handoffs, spreadsheet reliance, and rework, RiskEstimator improves accuracy, consistency, and speed across complex program environments while integrating seamlessly with WebEVM's enterprise cost engine.

(30)

Media Contact:

Kerby Lecka, 805.230.9230, kerby@wmwinc.com